

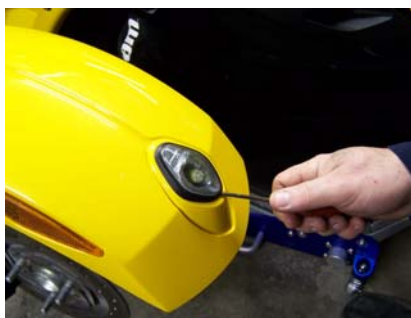
# ***Street Magic*® Spyder Mud Flap Light Installation Instructions**

- 1) Securely raise front end of Spyder on flat level surface remove front wheel. (See Pic. # 1)
  - 2) Remove fender tip light by pressing tap on bottom of light with small screwdriver. (See Pic. # 2)
  - 3) Remove front fender by removing the four bolts (two in front and two in back) that hold fender to fender support bracket. (See Pic. # 3)
  - 4) Place fender on a secure work surface and remove reflector decal from mud flap. Be sure to clean any glue residue from surface. Although the other fender may still be on the bike, we recommend removing both decals at this time in preparation for step 6. (See Pics. # 4 and # 5)
  - 5) Using 3/8 inch bit, drill hole centered in old decal area for wires from light to pass through. (See Pic. # 6)
  - 6) After thoroughly cleaning any glue residue from flap surface, use the enclosed 3M Promoter Pad to wipe old decal area of both mud flaps and allow to dry at least 1 minute. (See Pic. # 7)
  - 7) Pass wires from light through hole. Remove tape backing from light, center in old decal area, and press light firmly in place. (See Pic. # 8)
  - 8) The fender support bracket has several drain holes drilled in the pockets which can be seen from above. Using zip ties, run wires from light along inside edge of bracket leaving zip ties loose until fender is remounted. (See Pics. # 9 and # 10)
  - 9) Route the wires following the same path as the fender tip light wires. Run mud flap wires into fender tip wire pocket in front of fender. (See Pic. # 11)
  - 10) Using the enclosed Posi Tap connectors, hook wires from mud flap light to fender tip harness. Red wire from mud flap light connects to orange wire in fender tip harness and black wire from fender tip light hooks to black wire from fender tip harness. (See Pic. # 12)
- If you have any questions on how to use Posi –Tap connectors see <http://www.posi-lock.com/posiplug.html>
- 11) Reinstall front fender, and test light operation. (See Pic #13)
  - 12) Reinstall front wheel torque lug nuts to 77 foot pounds.
  - 13) Repeat proceures1-12 for remaining fender.

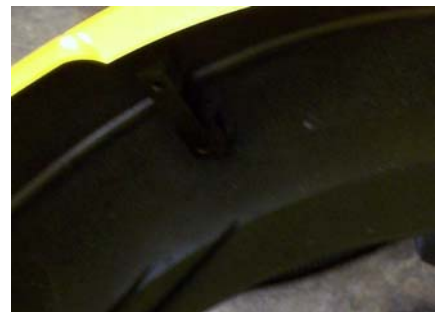
**Pic. # 1**



**Pic. # 2**



**Pic. # 3**



See <http://www.nomagicneon.com/installpages.html> for color pictures.

# Street Magic® Spyder Mud Flap Light Install Instructions

Pic. # 4



Pic. # 5



Pic. # 6



Pic. # 7



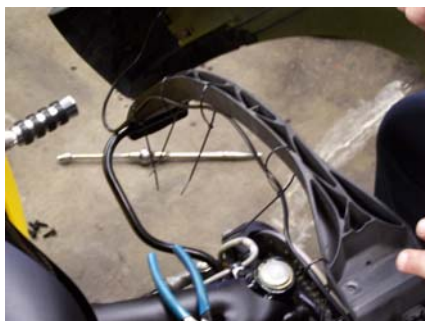
Pic. # 8



Pic. # 9



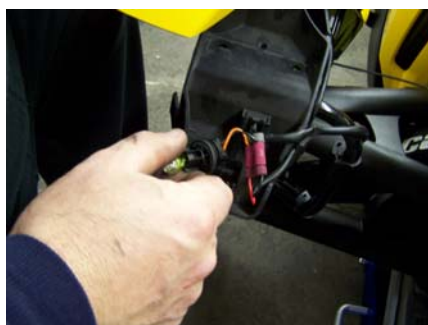
Pic. # 10



Pic. # 11



Pic. # 12



Pic. # 13

